

CRAFT

Craft™ is a fully upholstered modular lounge seating and table series that features six fun shapes for seating + five tables that can be used interchangeably together or alone in multiple environments. Craft is easy to configure, durable and ideal for open spaces.



sample layouts

modular ottomans



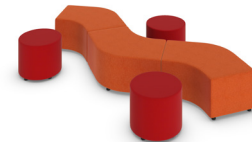
two wedge units



four wedge units
and one square unit



three curve-120 degree units,
three half round units
and three round units



three curve-120 degree units and
three round units



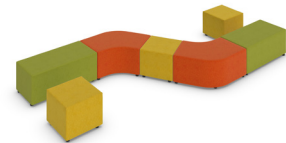
three curve-120
degree units



two square units and three
curve-120 degree units



three square units and
two rectangle units



three square units, two rectangle
units and two curve-120 degree units

tables



square cube docking table
and four square units



single docking table
and one square unit



single docking table with
cut-out for power module
and one round 20" unit



website

CRAFT

upholstery options

can be upholstered in all global grade 1 seating textiles or in luxhide bonded leather

construction

puzzle box construction featuring high grade polyurethane foam

durable frame, holds up to 300 lbs. and is built to last
limited lifetime warranty

standard seat

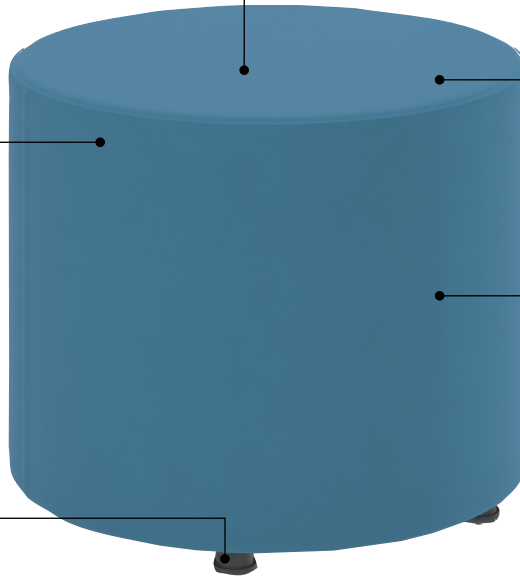
seat height 17.5"
from floor

certifications

GREENGUARD Gold

stationary or mobile

1.5" tall black nylon glide
optional dual wheel premium casters





round 20" unit

Specifications

luxhide or fabricMVL13007
 ergonomic features M, N
 dimensions20"W x 20"D x 17.5"H

fully upholstered modular ottomans

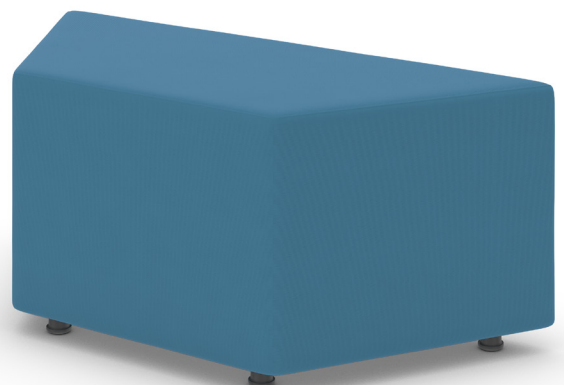
- modular non-handed components can be fully reconfigured and are ideal for open spaces
- 6 geometric shapes (round, half round, wedge, curve-120 degree, rectangle and square) allow infinite layout possibilities
- standard with 1.5" tall nylon glides
- optional dual wheel premium casters available
- can be upholstered in luxhide bonded leather or in all global grade 1 seating textiles



half round 40" unit

Specifications

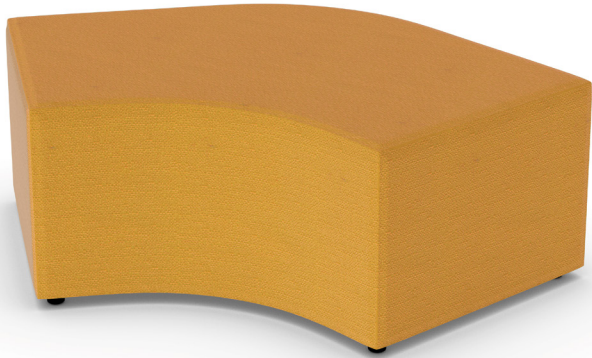
luxhide or fabricMVL13008
 ergonomic features M, N
 dimensions40"W x 21"D x 17.5"H



wedge unit

Specifications

luxhide or fabricMVL13009
 ergonomic features M, N
 dimensions40"W x 17.75"D x 17.5"H



curve-120 degree unit

Specifications

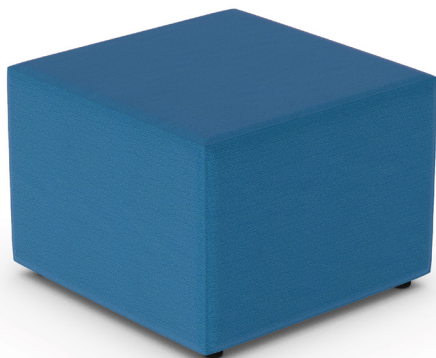
luxhide or fabric MVL13010
 ergonomic features M, N
 dimensions 43.5"W x 27.5"D x 17.5"H



rectangle unit

Specifications

luxhide or fabric MVL13011
 ergonomic features M, N
 dimensions 40"W x 20"D x 17.5"H



square unit

Specifications

luxhide or fabric MVL13012
 ergonomic features M, N
 dimensions 20"W x 20"D x 17.5"H



craft overtables

- craft overtables are the perfect partner to craft seating products to create casual meeting solutions for today's workplace and learning environments
- overtables are designed to sit over Craft seating units and are lightweight and easy to move
- 11/16" thick thermally fused laminate surfaces with 1/2" solid steel wire legs in Chrome finish
- available in many laminate finishes



rectangular overtable

Specifications

laminate MVL13021
weight/volume 16.5 lbs (7.48 kg) / 1.2 ft³ (0.03 m³)
dimensions 16"W x 26"D x 19"H



wedge overtable

Specifications

laminate MVL13022
weight/volume 12.5 lbs (5.67 kg) / 1.2 ft³ (0.03 m³)
dimensions tapers from 16"-5.25"W x 26"D x 19"H



square cube docking table

Specifications

laminate ML35SCDK
weight/volume 78 lbs (35.38 kg) / 2.2 ft³ (0.06 m³)
dimensions 35"W x 35"D x 19.5"H

craft docking tables

- tables help ground the space and provide nesting spaces to keep craft cubes tidy when not in use
- docking tables provide a convenient place to set your drinks, snacks or personal devices
- side tables are optional with access to power or USB charging
- 1" thick thermally fused laminate surfaces with 2mm thick matching edgeband
- equipped with levelers for uneven flooring
- when square cubes are fully nested, the cubes extend 3" beyond the perimeter of the laminate as an invitation to be pulled out and used again
- available in many laminate finishes



single docking table

Specifications

laminate ML2418CDK
weight/volume 53 lbs (24.04 kg) / 2.1 ft³ (0.05 m³)
dimensions 24"W x 18.2"D x 19.5"H



single docking table with cut-out

Specifications

laminate ML2420CDKP
weight/volume 55 lbs (24.95 kg) / 2.1 ft³ (0.05 m³)
dimensions 24"W x 20.5"D x 19.5"H

*power modules are available separately