

OTG PANELS

OTG panels are sleek, simple and innovative. This slim-line system adheres to the timeless adage of “less is more”. Available in 66”H by 36”, 48” or 60”W, these innovative panels create efficient workspace surrounds or freestanding/mobile dividers. Minimal components offer maximum flexibility making them simple to specify and easy to install. Self-leveling connectors accommodate any angle including 90°, 120°, T and X connections. Off-module connectors are also available.



features + benefits

- sleek simple aesthetic
- 1.3” thick overall by 66”H in 3 standard widths
- painted aluminum frame with fabric upholstered inserts
- universal and off module connector kits
- 6.25” raised bottom for ease of cleaning
- add-on foot kits to create freestanding or mobile panels
- economical price point
- versatile and adaptable to various workplace needs



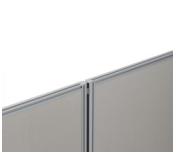
website



OTG PANELS



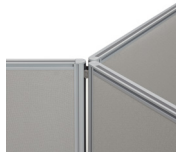
universal connector | any angle



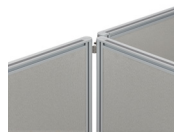
Straight connection



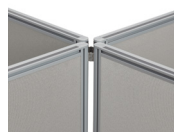
90° connection



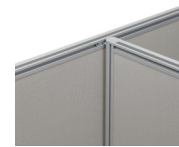
120° connection



3-way connection

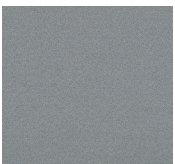


4-way connection



off module connector

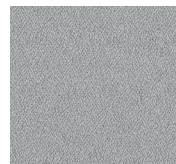
fabric



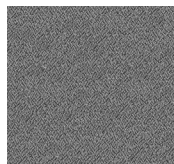
LL14 – Lola
Blue Mist



LL12 – Lola
Caramel Cream



LL37 – Lola
Cinder



LL36 – Lola
Granite



LL11 – Lola
Medium Taupe

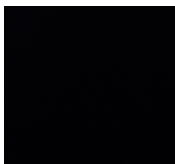


LL38 – Lola
Sandstone

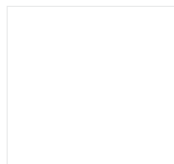


LL35 – Lola
Spray

finishes - frame | flat foot | mobile foot



BLK
Black



DWT
Designer White



TUN
Tungsten

