

**10** DAY  
QUICK  
SHIP

2024 Catalogue

---

Pricing effective April 2024





## Quick Ship Program

Inside, you'll find many workplace furniture solutions (seating, desks, files, tables and accessories) all at different price points and all available for quick delivery!

While we offer many additional products in a wide array of styles and colours, many items will be available to ship to you in 2-10 days. Each product is listed with the model number and available textile(s) and/or finish(es).

**10 DAY QUICK SHIP**

Your product will ship within **10 business days!**

*Special terms and conditions apply, please contact your Global sales representative.*



Delivery direct to end user is available on all products, please request a quote.



Products with this designation are suitable for courier shipment throughout Canada. A freight quote is not required.



Products with this designation can be customized in a choice of textiles and colours.



Offices to Go (OTG) products carry a limited lifetime warranty. **Please refer to the OTG price list for details.**



Global products carry a limited lifetime warranty. **Please refer to the Global price lists for details.**

work from home	1
desks + tables	2
productivity solutions	9
lounges + reception seating	12
mesh seating	13
management seating	17
guest seating	20
ergonomic + task seating	22
multi-purpose seating	26
filing + storage	29
textiles + finishes	33
casters	37
a canadian story	38



MEMBER  
**BIFMA**  
bifma.org





work from home **10** DAY QUICK SHIP

desks + tables **10** DAY QUICK SHIP

## The ideal work from home setup

The ideal setup includes a number of components that work together to create an ecosystem that helps with:

- neutral working postures
- boosting productivity
- maintaining wellness

This example features an ergonomic task chair, a sit-stand desk, a power unit, a monitor support and a desk light.



## Newland™ | OFFICES TOGO

Available in Absolute Acajou (ACJ) and Noce Grigio (NGL), please see sample packages or build your own:  
note: can be assembled for left or right hand applications



**Single Pedestal Desks**  
with hanging box/file pedestal

**NLP111 - \$1,203**

- 1 NL6030D
- 1 NL23HBF

**NLP516 - \$1,220**

- 1 NL6630D
- 1 NL23HBF

new



**Single Pedestal Desks**  
with box/box/file pedestal

**NLP232 - \$1,414**

- 1 NL6030D
- 1 NL23BBF

**NLP517 - \$1,431**

- 1 NL6630D
- 1 NL23BBF

new





**Double Pedestal Desks**  
with hanging box/file pedestals

**NLP110 - \$1,737**

- 1 NL6630D
- 2 NL23HBF

**NLP518 - \$1,773**

- 1 NL7230D
- 2 NL23HBF

**new**

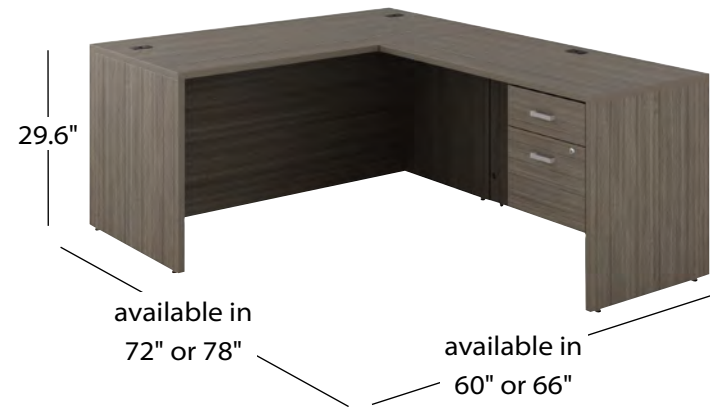


**Double Pedestal Desk**  
with box/file pedestals

**NLP519 - \$2,195**

- 1 NL7230D
- 2 NL23BBF

**new**



**L-Shaped Desks**  
with hanging box/file pedestal

**NLP524 - \$1,783**

- 1 NL6030D
- 1 NL4224R
- 1 NL23HBF

**new**

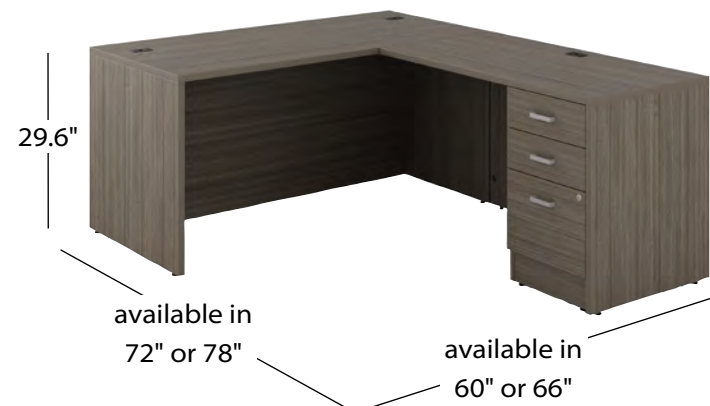
**NLP520 - \$1,800**

- 1 NL6630D
- 1 NL4224R
- 1 NL23HBF

**new**

**NLP107 - \$1,819**

- 1 NL6030D
- 1 NL4824R
- 1 NL23HBF



**L-Shaped Desks**  
with box/file pedestal

**NLP525 - \$1,994**

- 1 NL6030D
- 1 NL4224R
- 1 NL23BBF

**new**

**NLP521 - \$2,011**

- 1 NL6630D
- 1 NL4224R
- 1 NL23BBF

**new**

**NLP515 - \$2,030**

- 1 NL6030D
- 1 NL4824R
- 1 NL23BBF

**NLP108 - \$2,047**

- 1 NL6630D
- 1 NL4824R
- 1 NL23BBF

**new**



**L-Shaped Desk**  
with double hanging box/file pedestals

**NLP522 - \$2,389**

- 1 NL7230D
- 1 NL4824R
- 2 NL23HBF

**new**



**L-Shaped Desk**  
with double box/box/file pedestals

**NLP523 - \$2,811**

- 1 NL7230D
- 1 NL4824R
- 2 NL23BBF

**new**



**Build your own package**



**Layout 1**

Table desk with mobile pedestal and bookcase(s)

- 1 table desk (NL4824DHL or NL6030DHL)
- 1 mobile pedestal (NLMP23BF or NLMP23BBF)
- + 1 or more bookcases (NL66BC)

**Layout 2**

Single pedestal desk with bookcase(s)

- 1 rectangular desk shell (NL6030D, NL6630D or NL7230D)
- 1 pedestal (NL23HBF or NL23BBF)
- + 1 or more bookcases (NL66BC)



**Layout 3**

L-shaped desk with pedestal and bookcase(s)

- 1 rectangular desk shell (NL6030D, NL6630D or NL7230D)
- 1 return (NL4824R or NL4224R)
- 1 pedestal (NL23HBF or NL23BBF)
- + 1 or more bookcases (NL66BC)

**Layout 4**

Height adjustable table with mobile pedestal and bookcase(s)

- 1 height adjustable base (3-stage MLIR30B)
- 1 table top (NL4623HAT or NL5829HAT)
- 1 mobile pedestal (NLMP23BF or NLMP23BBF)
- + 1 or more bookcases (NL66BC)





**Newland™** | **OFFICES TOGO**

Available in Absolute Acajou (ACJ) and Noce Grigio (NGL)

**Table Desks**

Available with Tungsten legs



**NL4824DHL - \$703**  
48w x 24d x 29.6h



**NL6030DHL - \$762**  
60w x 29.7d x 29.6h

**Rectangular Desk Shells**

**Returns**



**NL6030D - \$686**  
60w x 29.7d x 29.6h

**NL6630D - \$703**  
66w x 29.7d x 29.6h

**NL7230D - \$739**  
72w x 29.7d x 29.6h



**NL4224R - \$580**  
42w x 24d x 29.6h

**NL4824R - \$616**  
48w x 24d x 29.6h

**Pedestals**



**NL23HBF - \$517**  
*Hanging Box/File Pedestal*  
16w x 23d x 18h



**NL23BBF - \$728**  
*Box/Box/File Pedestal*  
16w x 23.3d x 28.5h



**NLMP23BF - \$774**  
*Box/File Mobile Pedestal*  
16w x 22.7d x 22.1h



**NLMP23BBF - \$925**  
*Box/Box/File Mobile Pedestal*  
16w x 22.7d x 28h

**Bookcase**



**NL66BC - \$844**  
30w x 12d x 65.6h

**Newland™ Electric Height Adjustable Tables**



Tops available in Absolute Acajou (ACJ), Designer White (DWT) and Noce Grigio (NGL) with Black or Tungsten base  
*Note: Tables can be ordered as a package or individually (bases and tops)*



**Quick Assembly Electric Height Adjustable Table (Base + Top)**

**NL48243QHT - \$1,468**  
3-stage Newland table  
46w x 23d x 22.6-48.2h

**NL60303QHT - \$1,510**  
3-stage Newland table  
58w x 29d x 22.6-48.2h



**Quick Assembly Height Adjustable Components**  
(tops + bases sold individually)

**Base MLIR30B - \$1,204**  
3-stage accommodates tops  
from 46-70w x 23-29d

**Tops NL4623HAT - \$264**  
46w x 23d x 1h

**NL5829HAT - \$306**  
58w x 29d x 1h

**Quick Assembly Instructions**

Unfold leg columns. Attach feet and worksurface support to base. Fasten assembly to top. Plug in connections and start to use.



**Foli™** | **global**

Available in Silver base. *Note: Base and top must be ordered separately.*  
To be used with Newland tops NL4623HAT or NL5829HAT (see above for details).



**3-Stage Electric Height Adjustable Base**

**PH3T6601 - \$1,686**  
Accommodates tops  
from 46-70w x 23-29d

# Productivity Solutions



Note: Keyboard mechanisms and trays can be ordered individually or as a package

## Keyboard Trays



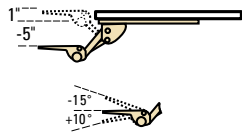
**KT27M02 - \$263**  
27" HDPE Tray  
27.5w x 11.5d x 0.38h



**KTMT03 - \$284**  
Tray with Height  
Adjustable Mouse Support  
23w x 11.5d x 2.8h

## Keyboard Mechanisms

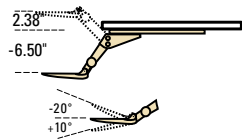
**KSM01-21 - \$203**  
Soft Touch Keyboard  
Support Mechanism  
9w x 23.8d x 4.3h



**KP0102 - \$466**  
Soft Touch Mechanism  
with HDPE Tray and  
Left and Right Mouse  
Supports

Not available  
through Quick  
Ship program

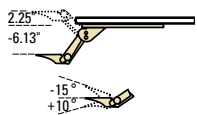
**KSFK-21 - \$266**  
Slim Fit Keyboard  
Support Mechanism  
7.5w x 23.8d x 4.75h



**KPSF02 - \$529**  
Slim Fit Mechanism  
with HDPE Tray and  
Left and Right Mouse  
Supports

**KPSF03 - \$550**  
Slim Fit Mechanism  
with Tray and Height  
Adjustable Mouse  
Support

**KSM02-21 - \$266**  
Lift-N-Lock Keyboard  
Support Mechanism  
9w x 23.8d x 9.7h



**KP0202 - \$529**  
Lift-N-Lock Mechanism  
with HDPE Tray and  
Left and Right Mouse  
Supports

Not available  
through Quick  
Ship program

## CPU Holder



**PCPU-GT - \$281**  
CPU Holder on Glide Track  
3.5w x 9.3d x 13.5h

## Power/Data



**PMSDPM - \$268**  
Power/Data Block  
Black  
6.5w x 3.5d x 2.75h



**PCSN01 - \$115**  
Cable Snake  
3w x 2d x 31.25h

## Monitor Arms



**PSMA1 - \$418**  
G7 Single Monitor Arm  
Available in Silver, 5.5d x 21h



**PSMA2 - \$734**  
G7 Double Monitor Arm  
Available in Silver, 5.5d x 21h



**PSMS - \$145**  
G7 Mini Slide Monitor Arm  
Available in Silver, 11w x 6d x 4.5h

## Coat Trees



**PCOS2 - \$186**  
Black Metal Coat Tree  
(ships 3 per carton)  
25w x 25d x 60h

**PCOS3 - \$186**  
Chrome Metal Coat Tree  
(ships 3 per carton)  
25w x 25d x 60h  
not shown

OTG Accessories



**MVLCPU - \$165**  
**CPU Holder Dual Strap**  
 4w x 11d x 1.5h



**MVLKP01 - \$369**  
**Articulating Keyboard Package**  
 Articulating Arm and 27" HDPE Tray



**MVLKBT - \$173**  
**Keyboard Drawer**  
 20.6w x 12.5d x 4h



**MVL1SDEH - \$346**  
**Single Screen Monitor Arm**



**MVL2SDEH - \$476**  
**Dual Screen Monitor Arm**



lounge + reception seating **10** DAY QUICK SHIP

Suburb™



**MVL13051 - \$862**

**Lounge Chair**

Available in Luxhide bonded leather, Black (PU30/BL20) with Black wood legs  
 30.25w x 32.75d x 31.5h



MVL13051

**MVL13053 - \$1,767**

**Three Seat Sofa**

Available in Luxhide bonded leather, Black (PU30/BL20) with Black wood legs  
 74.25w x 32.75d x 31.5h



MVL13053

Lite-Lift™ II Tables



**MVLFRT48 - \$217**  
**48" Rectangular Folding Table**  
 Available in Oyster Grey  
 48w x 24d x 29.25h



**MVLFRT60 - \$290**  
**60" Rectangular Folding Table**  
 Available in Oyster Grey  
 60w x 30d x 29.25h

**MVLFRT72 - \$305**  
**72" Rectangular Folding Table**  
 Available in Oyster Grey  
 72w x 30d x 29.25h

**MVLFRT96 - \$469**  
**96" Rectangular Folding Table**  
 Available in Oyster Grey  
 96w x 30d x 29.25h



**OTG11841 - \$734**  
**Rectangular Folding Table Dolly**  
 Available in Charcoal  
 (for 60, 72 or 96" w rectangular tables only)  
 30.25w x 75.75d x 45.25h



**MVLFRT48D - \$349**  
**48" Round Table**  
 Available in Oyster Grey  
 48 dia x 29.25h

**MVLFRT60D - \$558**  
**60" Round Table**  
 Available in Oyster Grey  
 60 dia x 29.25h







# mesh seating **10** DAY QUICK SHIP

**Amira™** | OFFICES TOGO

**OTG13020 - \$425**

**Mesh Medium Back Tilter**  
Available in Black polyester with Black (BLK) mesh back or Blue polyester with Blue/Grey (BLU) mesh back and Black base  
23.5w x 25d x 40.5h



OTG13020 (BLK)      OTG13020 (BLU)

**Avro™** | OFFICES TOGO

**MVL3101 - \$811**

**Mesh Back Synchro-Tilter**  
Available in various colours with Natural (MS74) mesh back and Black base. Choose a textile (Carrera, Fusion, Jenny) or Luxhide bonded leather.  
26w x 27d x 38.5h



MVL3101

See page 33 for textile options

**Ibex™** | OFFICES TOGO

Upholstered seat models available in various colours with Black mesh back and Black base. Choose a textile (Carrera, Fusion, Jenny) or Luxhide bonded leather.

See page 33 for textile options

**MVL2801 - \$726**

**Mesh Back Synchro-Tilter**  
26w x 26.5d x 39.5h

**MVL2803 - \$791**

**Mesh Back Multi-Tilter**  
26w x 27d x 39.5h

**MVL2804 - \$695**

**Mesh Back Tilter**  
26w x 26.5d x 38.5h

**MVL2823 - \$846**

**Mesh Back and Seat Multi-Tilter**  
Available in Black mesh back and seat with Black base  
26w x 27d x 39.5h



MVL2801



MVL2803



MVL2804



MVL2823

**Java®** | OFFICES TOGO

**OTG10902 - \$383**

**Mesh High Back Tilter**  
Available in mesh fabric, Black (MS20) with Black base  
24w x 23d x 39h



OTG10902

**Geo™** | OFFICES TOGO

**OTG11636B - \$397**

**Mesh Low Back Tilter**  
Available in mesh fabric, Black (MS20) with Black base  
22w x 21d x 38h



OTG11636B

**Kaysee™** | OFFICES TOGO

**OTG12112B - \$458**

**Mesh Back Tilter**  
Available in Luxhide bonded leather, Black (BL20) with Black mesh back and Black base  
25w x 24d x 41h



OTG12112B

Lumi™ OFFICES TOGO new

**OTG11357 - \$583**  
**Mesh High Back Synchro-Tilter**  
 Available in Bantam, Iron (BM24, grade 1)  
 with Grey mesh back  
 25.75w x 24d x 38.75h



OTG11357

Toma™ OFFICES TOGO

**OTG13032 - \$534**  
**Mesh Back Synchro-Tilter**  
 Available in polyester fabric, Black with Black base  
 24w x 24d x 40h



OTG13032

Petra™ OFFICES TOGO

**OTG11320B - \$494**  
**Mesh Back Tilter**  
 Available in mesh fabric, Black (MS20) with Black base  
 24w x 23d x 39.5h



OTG11320B

Vion™ global new

Available in a textile of your choice  
 (grade 1: Carrera, Fusion or Jenny or grade 2: Allante FRee)  
 with Black (MS69) mesh back and Black base.



**6321-3 - \$1,075 (grade 1) | \$1,107 (grade 2)**

**Mesh High Back Multi-Tilter**  
 with upgraded G5 height adjustable arms,  
 lumbar support, 5" low rise lift cylinder (5L)  
 and dual wheel carpet casters (C1)  
 25.5w x 24d x 41h



6321-3



6322-3

**6322-3 - \$1,018 (grade 1) | \$1,050 (grade 2)**

**Mesh Medium Back Multi-Tilter**  
 with upgraded G5 height adjustable arms,  
 lumbar support, 5" low rise lift cylinder (5L)  
 and dual wheel carpet casters (C1)  
 25.5w x 24d x 39h



6325



6325C

**6325 - \$601 (grade 1) | \$633 (grade 2)**

**Mesh Low Back Armchair**  
 25.5w x 24d x 34.5h

**6325C - \$691 (grade 1) | \$723 (grade 2)**

**Mesh Low Back Armchair on Casters**  
 dual wheel carpet casters (C82)  
 25.5w x 24d x 34.5h

Stradic™ OFFICES TOGO

**MVL11860 - \$515**  
**Mesh Back Tilter**  
 Available in Quilt, Black (QL10, grade 1)  
 with Black base  
 25w x 23.5d x 35.5h



MVL11860

TL™ OFFICES TOGO

**MVL6070 - \$1,099**  
**High Back Multi-Tilter with upgraded 4D Height Adjustable Arms**  
 Available in Fusion, Carbon (FU85, grade 1)  
 with Black mesh back (D55) and Black base  
 24w x 24d x 41.37h

**MVL6074 - \$999**  
**High Back Weight Sensing Synchro-Tilter with upgraded 4D Height Adjustable Arms**  
 Available in Fusion, Carbon (FU85, grade 1)  
 with Black mesh back (D55) and Black base  
 24w x 24d x 39.87h



MVL6070



MVL6074

Zim™ OFFICES TOGO

**OTG11351 - \$519**  
**Mesh High Back Weight Sensing Synchro-Tilter**  
 Available in Black polyester with Black (B)  
 or Grey (G) mesh back and Black base  
 26w x 24.5d x 43h



OTG11351B



OTG11351G





management seating **10** DAY QUICK SHIP

**Altona™** | OFFICES TOGO

**OTG11616B - \$381**  
**High Back Tilter**  
 Available in Luxhide bonded leather, Black (PU30/BL20) with Black base  
 24w x 26.5d x 41h



OTG11616B

**Annapolis™** | OFFICES TOGO

**MVL2732 - \$372**  
**High Back Tilter**  
 Available in Luxhide bonded leather, Black (PU30/BL20) with Black base  
 25.5w x 28d x 43h



MVL2732

**Ashmont™** | OFFICES TOGO

**MVL2780 - \$761**  
**High Back Tilter**  
 Available in Luxhide bonded leather, Black (PU30/BL20) with Black base  
 27w x 28d x 42h



MVL2780



MVL2781

**MVL2781 - \$721**  
**Medium Back Tilter**  
 Available in Luxhide bonded leather, Black (PU30/BL20) with Black base  
 27w x 28d x 39h

**MVL2782 - \$542**  
**Guest Chair**  
 Available in Luxhide bonded leather, Black (PU30/BL20) with Black base  
 24.5w x 25.5d x 36.5h



MVL2782

**Brighton™** | OFFICES TOGO

**MVL2787 - \$725**  
**High Back Tilter**  
 Available in Luxhide bonded leather, Black (PU30/BL20) with Black base  
 26.5w x 28d x 44h



MVL2787

**Carleton™** | OFFICES TOGO

**OTG11358 - \$585**  
**High Back Tilter**  
 Available in Graphite polyester with Black base  
 25w x 27.5d x 43h



OTG11358



OTG11359

**OTG11359 - \$615**  
**Extended High Back Tilter**  
 Available in Graphite polyester with Black base  
 25w x 28d x 47h

**Global Accord™** | global

Available in Allante FRee in various colours with polished aluminum frame.



**2670-2 - \$1,249**  
**High Back Knee-Tilter**  
 Dual wheel carpet casters (C1) and 4" low rise lift cylinder (4L)  
 25w x 25d x 44h



2670-2



2670-4

**2670-4 - \$1,091**  
**High Back Tilter**  
 Dual wheel carpet casters (C1) and 4" gas lift cylinder (4G)  
 25w x 25d x 42.5h



2671-2



2671-4

**2671-2 - \$1,203**  
**Medium Back Knee-Tilter**  
 Dual wheel carpet casters (C1) and 4" low rise lift cylinder (4L)  
 25w x 25d x 38.5h

**2671-4 - \$1,044**  
**Medium Back Tilter**  
 Dual wheel carpet casters (C1) and 4" gas lift cylinder (4G)  
 25w x 25d x 37h

**2672-6 - \$1,233**  
**Medium Back Height Adjustable Stool**  
 Dual wheel carpet casters (C1)  
 25w x 25d x 46.5h



2672-6

Kazan™ | OFFICES TOGO

OTG11670B - \$750

High Back Tilter  
Available in Luxhide bonded leather, Black (PU30/BL20) with Black base  
25.5w x 29.5d x 46h



OTG11670B



# guest seating 10 DAY QUICK SHIP

Masi™ | OFFICES TOGO

OTG10740 - \$520

High Back Tilter  
Available in Black polyester with Black mesh back and base  
25.5w x 24.5d x 42.5h



OTG10740

Centro™ | OFFICES TOGO

OTG3915 - \$400

Guest Chair  
Available in Luxhide bonded leather, Black (PU30/BL20) with Black frame  
24.5w x 27d x 33.5h



OTG3915

Pacific® | OFFICES TOGO

MVL11870 - \$612

High Back Tilter  
Available in Luxhide bonded leather, Black (PU30/BL20) with Black base  
25.5w x 28.5d x 44.5h



MVL11870

Dash® | OFFICES TOGO

OTG11760B - \$315

Mesh Back Guest Chair  
Available in mesh fabric, Black (MS20) with Black frame  
23.5w x 23.5d x 34h



OTG11760B

Ultra® | OFFICES TOGO

MVL11730 - \$699

High Back Tilter  
Available in Luxhide bonded leather, Black (PU30/BL20) with Chrome base  
23.5w x 24.5d x 40h



MVL11730



MVL11732

MVL11732 - \$629

Armless High Back Tilter  
Available in Luxhide bonded leather, Black (PU30/BL20) with Chrome base  
21w x 24.5d x 40h

Eor™ | OFFICES TOGO

OTG3920B - \$344

Guest Chair with Upholstered Back and Seat  
Available in Luxhide bonded leather, Black (PU30/BL20) with Black frame  
24w x 24.5d x 34h



OTG3920B



OTG3930B

OTG3930B - \$344

Mesh Back Guest Chair  
Available in Luxhide bonded leather, Black (PU30/BL20) with Black mesh back and Black frame  
24.75w x 24d x 34.25h





**MVL2819 - \$628**

**Guest Chair with Upholstered Back and Seat**

Available in Luxhide bonded leather,  
Black (BL20) with Black base  
25.25w x 24d x 34.5h



MVL2819



ergonomic + task seating **10** DAY QUICK SHIP



**MVL2747 - \$256**

**Low Back Stacking Armchair**

Available in Jenny, Ebony (JN02, grade 1) with Black frame  
Ships 2 per carton  
23w x 22.5d x 32h



MVL2747



MVL2748

**MVL2748 - \$199**

**Low Back Armless Stacking Chair**

Available in Jenny, Ebony (JN02, grade 1) with Black frame  
Ships 2 per carton  
19.5w x 22.5d x 32h



**OTG11950B - \$567**

**Medium Back Multi-Tilter**

Available in Quilt, Black (QL10, grade 1) with Black base  
26.5w x 23.5d x 39h



OTG11950B



**OTG11858B - \$631**

**High Back Tilter**

Available in Luxhide bonded leather,  
Black (PU30/BL20) with Chrome base  
26w x 25.5d x 44.5h



OTG11858B



**OTG11510B - \$492**

**Mesh Back Tilter**

Available in mesh fabric, Black (MS20)  
25w x 21.5d x 35.5h



OTG11510B

Full-Time™



**MVL2900 - \$669**

**Medium Back Multi-Tilter**

Available in Quilt, Black (QL10, grade 1) with Black base  
24.5w x 25d x 41h



MVL2900

Granada® Deluxe



Available in a textile of your choice  
(Carrera, Fusion or Jenny) with Black base.



See page 33 for textile options

**1170-3 - \$929**

**High Back Multi-Tilter**

Height adjustable arms (3B), dual wheel carpet casters (C65) and 4" low rise lift cylinder (4L)  
26w x 23.5d x 45h



1170-3



1171-3

**1171-3 - \$888**

**Medium Back Multi-Tilter**

Height adjustable arms (3B), dual wheel carpet casters (C65) and 4" low rise lift cylinder (4L)  
26w x 23.5d x 42h

MVL File Buddy™



**MVL1105 - \$284**

**Swivel Stool - 5" Pneumatic Seat Height Adjustment**

Available in Leatherite, Black (70)  
13.5w x 13.5d x 18.5h

**MVL1110 - \$351**

**Swivel Stool - 10" Pneumatic Seat Height Adjustment**

Available in Leatherite, Black (70)  
13.5w x 13.5d x 27.5h



MVL1105



MVL1110

ObusForme® Comfort



Available in a textile of your choice (Carrera, Fusion or Jenny) with Black base. Model 1240-3 also available in Luxhide bonded leather.



See page 33 for textile options

**1240-3 (Textile) - \$1,011**

**High Back Multi-Tilter with G3 arms**

Dual wheel carpet casters (C65) and 4" low rise lift cylinder (4L)  
26w x 25d x 48h



1240-3  
Textile



1240-3  
Luxhide

**1240-3 (Luxhide) - \$1,083**

**High Back Multi-Tilter with G3 arms**

Dual wheel carpet casters (C65) and 4" low rise lift cylinder (4L)  
26w x 25d x 48h

**1241-3 (Textile) - \$954**

**Medium Back Multi-Tilter with G3 arms**

Dual wheel carpet casters (C65) and 4" low rise lift cylinder (4L)  
26w x 25d x 44h



1241-3



1261-3

**1260-3 (Textile) - \$1,133**

**High Back Multi-Tilter with Schukra and G3 arms**

Dual wheel carpet casters (C65) and 4" low rise lift cylinder (4L)  
26w x 25d x 48h

**1261-3 (Textile) - \$1,075**

**Medium Back Multi-Tilter with Schukra and G3 arms**

Dual wheel carpet casters (C65) and 4" low rise lift cylinder (4L)  
26w x 25d x 44h

Overtime™



**MVL2756 - \$727**

**High Back Multi-Tilter**

Available in Luxhide bonded leather, Black (PU30/BL20) or Jenny, Ebony (JNO2, grade 1) with Black base  
26w x 24.5d x 40h



MVL2756

Six 13™



**OTG11613B - \$585**

**Medium Back Multi-Tilter**

Available in Quilt, Black (QL10, grade 1) with Black base  
25.5w x 24d x 39h



OTG11613B



Six 31™ | OFFICES TOGO

**OTG11531B - \$750**

**Medium Back Multi-Tilter**

Available in Quilt, Black (QL10, grade 1) with Black base  
25.5w x 24d x 42.5h

**OTG11631B - \$550**

**Medium Back Operator**

Available in Quilt, Black (QL10, grade 1) with Black base  
25.5w x 25d x 44h



OTG11531B

OTG11631B



multi-purpose seating **10** DAY QUICK SHIP

Tritek® Ergo Select | global

**7482-3 - \$1,281**

**High Back Multi-Tilter with G2 Arms, Standard Seat**

Available in Fusion, Carbon (FU85, grade 1) with Black base,  
dual wheel carpet caster (C65) and 5" gas lift cylinder (5G)  
26.5w x 24d x 44h



7482-3

Dori 2™ | OFFICES TOGO

**OTG1220B - \$232**

**Stacking Armchair**

Available in Black polypropylene seat and back with Chrome frame  
Ships 4 per carton  
21.5w x 21d x 31.5h

**OTG1221B - \$214**

**Armless Stacking Chair**

Available in Black polypropylene seat and back with Chrome frame  
Ships 4 per carton  
18w x 21d x 31.5h



OTG1220B

OTG1221B

Yoho™ | OFFICES TOGO

**MVL2786 - \$373**

**Low Back Armless Task Chair**

Available in Luxhide bonded leather, Black (PU30/BL20)  
19w x 24d x 34h



MVL2786

Duet™ | global

**6620 - \$311**

**Stacking Armchair**

Available in Night (BLK) with Chrome frame  
Ships 4 per carton  
25.5w x 22.75d x 33.25h

**6621 - \$240**

**Armless Stacking Chair**

Available in Buzz Blue (BZB), Cloud (IVC),  
Latte (LAB), Night (BLK), Scarlet (SAR)  
and Shadow (SHW) with Chrome frame  
Ships 4 per carton  
20.75w x 22.75d x 33.25h



6620

6621

**6621G - \$258**

**Armless Stacking Ganging Chair**

Available in Night (BLK) with Chrome frame  
Ships 4 per carton  
23w x 22.75d x 33.25h

**6631 - \$436**

**Armless Stacking Bar Stool**

Available in Night (BLK) with Chrome frame  
Ships 2 per carton  
20.75w x 23.5d x 45h



6621G

6631

**Kylie™** | OFFICES TOGO

**OTG11355 - \$250**  
**Armless Stacking Chair**  
 Available in Cadet (C), Grey (G) and White (W)  
 Ships 3 per carton  
 19w x 20d x 32h



OTG11355C



OTG11355G



OTG11355W

**Sonic™** | global

**6508 - \$213**  
**Armless Stacking Chair**  
 Available in Night (BLK) polypropylene  
 with Black or Chrome frame  
 Ships 2 per carton  
 21.5w x 22d x 33h



6508



6508WS

**6508WS - \$243**  
**Armless Stacking Chair w/Wall Saver Frame**  
 Available in Night (BLK) polypropylene  
 with Chrome frame  
 Ships 2 per carton  
 21.5w x 23d x 33h


**Sparrow™** | OFFICES TOGO

**OTG10920 - \$268**  
**Mesh Guest Armchair**  
 Available in Quilt, Black (QL10, grade 1) with Black frame  
 Ships 4 per carton  
 24w x 21.5d x 33.5h



OTG10920

**Lite-Lift™ Chairs** | OFFICES TOGO

**OTG11674 - \$493**   
**Folding Chair**  
 Available in Oyster Grey with Black base  
 Set of 4  
 19w x 22d x 33.5h



OTG11674

**Popcorn™** | global

**6711 - \$208**  
**Armless Stacking Chair**  
 Available in Night (BLK) polypropylene with Chrome frame  
 Ships 4 per carton  
 20w x 23.5d x 32.5h



6711





filing + storage **10** DAY QUICK SHIP

MVL1900 Series



Available in Black (BLK), Designer White (DWT) and Grey (GRY)

Lateral Files



**MVL1936P2 - \$956**  
2 High  
12" Fixed Front Drawers  
36w x 19.25d x 27.31h



**MVL1936P3 - \$1,323**  
3 High  
12" Fixed Front Drawers  
36w x 19.25d x 39.06h



**MVL1936P4 - \$1,643**  
4 High  
12" Fixed Front Drawers  
36w x 19.25d x 52.06h



**MVL1936P5 - \$2,176**  
5 High, Top Opening  
12" High Receding  
Top Door, Roll-Out Shelf,  
4 fixed front drawers  
36w x 19.25d x 66.56h

9300 Series



Available in Black (BLK) and Grey (GRY)

Lateral Files



**9336-2F1H - \$1,047**  
2 Drawer Lateral  
36w x 18d x 27.12h



**9336-3F1H - \$1,307**  
3 Drawer Lateral  
36w x 18d x 40.5h



**9336-4F1H - \$1,741**  
4 Drawer Lateral  
36w x 18d x 54h



**9336-5F1H - \$2,152**  
5 Drawer Lateral  
36w x 18d x 65.25h

MVLPED Series



Pedestals



**MVLW23BBF - \$507**  
Box/Box/File Pedestal  
Available in Black (BLK),  
Designer White (DWT)  
and Grey (GRY)  
15w x 23d x 27.62h



**MVLW23FF - \$493**  
File/File Pedestal  
Available in Black (BLK),  
Designer White (DWT)  
and Grey (GRY)  
15w x 23d x 27.62h



**MVL23BBF - \$639**  
Box/Box/File Mobile Pedestal  
Available in Black (BLK)  
15w x 22.62d x 27.87h



**MVL19BF - \$613**  
Box/File Mobile Pedestal  
Available in Designer  
White (DWT)  
15w x 18.5d x 23.13h



**MVL23BF - \$638**  
Box/File Mobile Pedestal  
Available in Designer  
White (DWT)  
15w x 22.5d x 23.13h

**Storage Cabinets**



**9336-S72L - \$771**  
**Storage Cabinet**  
 Available in Black (BLK),  
 Designer White (DWT)  
 and Grey (GRY)  
 36w x 18d x 72h



**9336-5MSL - \$2,097**  
**Multi-Stor Cabinet**  
 Available in Black (BLK),  
 Designer White (DWT)  
 and Grey (GRY)  
 36w x 18d x 65.25h

**MVLSTOR Series**



**Storage Cabinet**



**MVL572L - \$850**  
**72" Storage Cabinet**  
 Available in Black (BLK),  
 Designer White (DWT)  
 and Grey (GRY)  
 36w x 18d x 72h

**Industrial Metal Shelving**



**BSS61872 - \$694**  
**18" Industrial Metal Shelving**  
 Available in Charcoal (CHR)  
 36w x 18d x 72h



**BSS62472 - \$779**  
**24" Industrial Metal Shelving**  
 Available in Charcoal (CHR)  
 36w x 24d x 72h

**2600 Series**



Available in Black (BLK), Designer White (DWT) and Grey (GRY)

**Vertical Files**



**26-201 - \$430**  
**2 Drawer Vertical - Letter**  
 15.15w x 26.56d x 29h



**26-251 - \$455**  
**2 Drawer Vertical - Legal**  
 18.15w x 26.56d x 29h



**26-401 - \$721**  
**4 Drawer Vertical - Letter**  
 15.15w x 26.56d x 52h



**26-451 - \$763**  
**4 Drawer Vertical - Legal**  
 18.15w x 26.56d x 52h

**MVL25 Series**



Available in Black (BLK), Designer White (DWT) and Grey (GRY)

**Vertical Files**



**MVL25201 - \$457**  
**2 Drawer Vertical - Letter**  
 15.15w x 25d x 29h



**MVL25251 - \$481**  
**2 Drawer Vertical - Legal**  
 18.15w x 25d x 29h



**MVL25401 - \$703**  
**4 Drawer Vertical - Letter**  
 15.15w x 25d x 52h



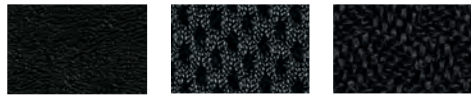
**MVL25451 - \$771**  
**4 Drawer Vertical - Legal**  
 18.15w x 25d x 52h



# textiles + finishes **10** DAY QUICK SHIP

Global's 10 Day Quick Ship program offers top selling products ready for delivery within 10 days of order placement. With products available in our most popular textiles and finishes, choosing the right product for your customers is easy.

## Textiles



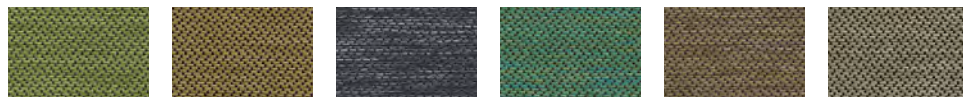
**70 - Leatherite**  
Black

**MS20 - Mesh Fabric**  
Black

**QL10 - Quilt**  
Black

## CARRERA | available on Avro, Ibex, Granada Deluxe, ObusForme Comfort and Vion

100% virgin polyester / GreenShield stain repellent finish



**CE84**  
Zest

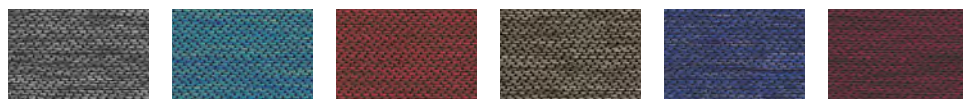
**CE85**  
Savannah

**CE86**  
Slate

**CE87**  
Rainforest

**CE88**  
Aspen

**CE89**  
Dune



**CE90**  
Flannel

**CE91**  
Azure

**CE92**  
Chili

**CE93**  
Jute

**CE95**  
Ink

**CE96**  
Sangria

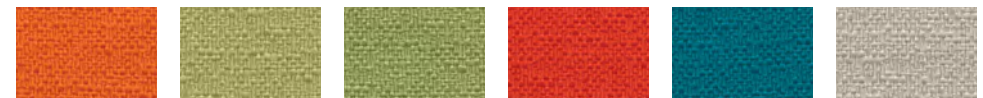


**CE97**  
Java

**CE98**  
Charcoal

## FUSION | available on Avro, Ibex, Granada Deluxe, ObusForme Comfort and Vion

90% virgin polyester, 10% post-consumer recycled polyester / GreenShield stain repellent finish



**FU71**  
Tangerine

**FU72**  
Fresh

**FU73**  
Moss

**FU74**  
Tomato

**FU75**  
Aqua

**FU76**  
Sandstone



**FU77**  
Granite

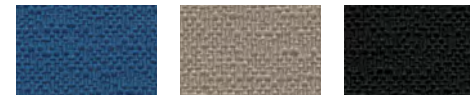
**FU78**  
Poppy

**FU79**  
Cadet

**FU80**  
Oasis

**FU81**  
Graphite

**FU82**  
Viola



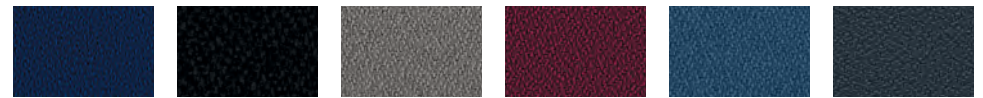
**FU83**  
Cobalt

**FU84**  
Flax

**FU85**  
Carbon

## JENNY | available on Avro, Ibex, Granada Deluxe, ObusForme Comfort and Vion

100% polyester



**JN01**  
Midnite

**JN02**  
Ebony

**JN03**  
Slate

**JN07**  
Vermilion

**JN08**  
Admiral

**JN11**  
Charcoal



**JN25**  
Silver Lining

**JN26**  
Oatmeal

**JN27**  
Sunflower

**JN28**  
Cascade

**JN29**  
Harvest

**JN30**  
Melon



**JN31**  
Berry

**JN32**  
Green Grass

**JN33**  
Roast

## Luxhide | available on Avro, Ibex and ObusForme Comfort

vinyl (PVC) coated fabric face / polyester liner / bonded leather backing



**BL20/PU30**  
Black

**BL22/PU32**  
Parchment

**BL23/PU33**  
Saddle

**BL24/PU34**  
Dark Brown

**BL26/PU36**  
Burgundy

**BL27/PU37**  
Charcoal



**BL28/PU38**  
White

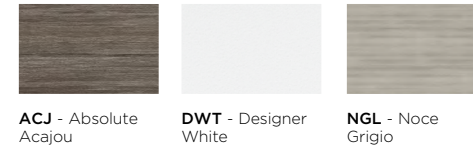
**BL34/PU41**  
Light Grey

**ALLANTE FRee** | available on Global Accord and Vion

100% vinyl (face) / 100% polyester (back)



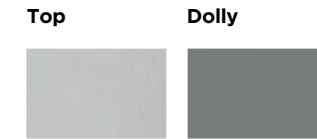
Laminate Finishes



Leg Finishes



Lite-Lift II Finishes



Filing Finishes



Metal Shelving



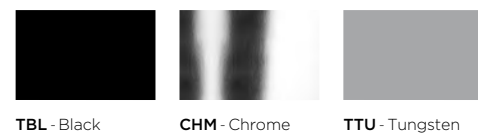
Seating Finishes



Plastic



Frame Finishes







# casters **10** DAY QUICK SHIP



**C65RSET - \$96**   
**2" dual wheel hard floor casters (set of 5)**  
 Hooded + standard collar



**C65SET - \$75**   
**2" dual wheel carpet casters (set of 5)**  
 Hooded + standard collar



**C9RSET - \$96**   
**2.5" dual wheel hard floor casters (set of 5)**  
 Hooded + no collar



**C1SET - \$75**   
**2" dual wheel carpet casters (set of 5)**  
 Hooded + no collar

SERIES / CASTER OPTIONS	C65RSET	C65SET	C9RSET	C1SET
Actin	•	•		
Altona	•	•		
Amira	•	•		
Annapolis	•	•		
Ashmont	•	•		
Ashton	•	•		
Avro			•	•
Bolt	•	•		
Brighton	•	•		
Carleton			•	•
Full-Time	•	•		
Geo	•	•		
Global Accord			•	•
Granada Deluxe	•	•		
lbex			•	•
Java	•	•		
Kaysee			•	•
Kazan	•	•		
Lumi			•	•
Masi	•	•		
MVL File Buddy	•	•		
ObusForme Comfort	•	•		
Overtime	•	•		
Pacific	•	•		
Petra	•	•		
Six 13	•	•		
Six 31	•	•		
Stradic			•	•
Toma			•	•
Tritek Ergo Select	•	•		
Ultra	•	•		
Vion			•	•
Yoho	•	•		
Zim			•	

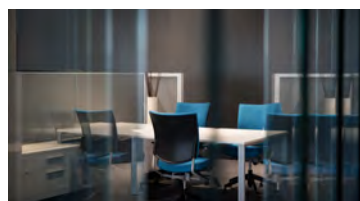


# a canadian story



**30**  
just-in-time  
manufacturing facilities

**3,000,000+**  
square feet of  
manufacturing locations



**3,000**  
employees

**30**  
showroom & distribution  
centres in North America

**2,000+**  
dealers across  
North America

Global Furniture Group originated in 1966, when the company was founded with the vision of manufacturing well-made office furniture at affordable prices. More than 70% of everything Global designs and produces is made in-house. With over 30 just-in-time manufacturing and product assembly plants within a 25 km radius in Toronto (Ontario), Global has the ability to respond, customize and deliver high quality products to its customers with ease and efficiency.

Global offers a comprehensive portfolio of solutions that are designed and engineered to meet the changing needs of the Workplace, Education and Healthcare markets. Our success over the past half-century owes much to our diverse team, who take pride in creating quality products and providing the highest level of service to our clients.

Above all, Global is a trusted partner. We are committed to our customers' needs by working together to develop lasting and valued solutions.

**Global Furniture Group | Global Express**  
177A Snidercroft Road, Concord, ON, L4K 2J8 • Tel: 905.660.5101 or 1.800.567.8901

© 2024, ®, ™ Trademarks of Global Furniture Group. These products may be covered by one or more issued trademarks, patents and design registrations or pending applications in Canada, the US and elsewhere, including: 80561, 80562, 86361, 86362, 86363, 86364, 120729, 124329, 350032, 350033, 371914, 376924, 378170, 405968, 405969, 416141, 417966, 428724. Specifications are correct at time of production.

All dimensions are in inches. Prices shown are current manufacturer's suggested list prices at the time of production. All applicable taxes are extra. Descriptions, specifications and prices are subject to change without notice. Errors and omissions are subject to correction. Colour samples depicted in this book are as close to actual. For warranty information refer to your current Global and Offices to Go price lists. **Revised April 1, 2024**