

Storage Cabinet

LO2/08-22

CONC10	CONC11	DOWEL	GLIDE	SUPPORT	HANDLE	LOCK	TUN220H	SCREW	PLASTIC CAP
A Cam Lock Pin 24Pcs+4Pcs	B Cam Lock 24Pcs+4Pcs	C Dowel 18Pcs+2Pcs	D Glide 4Pcs	E Shelf Support 4Pcs+1Pcs	F 96mm Shape Handle 2Pcs	G LOCK 1Set	H Hinge 4Pcs	I Screw #3*14 6Pcs	J CAMLOCK CAP 12Pcs+2Pcs
K Bumper Plastic 2Each	L DEEP CAMLOCK CAP 12Pcs+2Pcs	M Screw M6*40mm 6Pcs							

STEP1

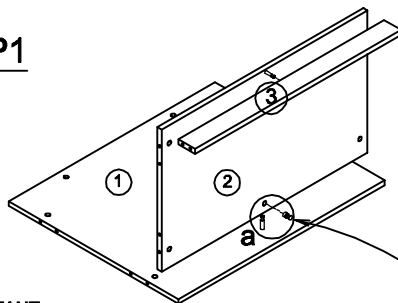
IMPORTANT:

FUNCTION OF CAM



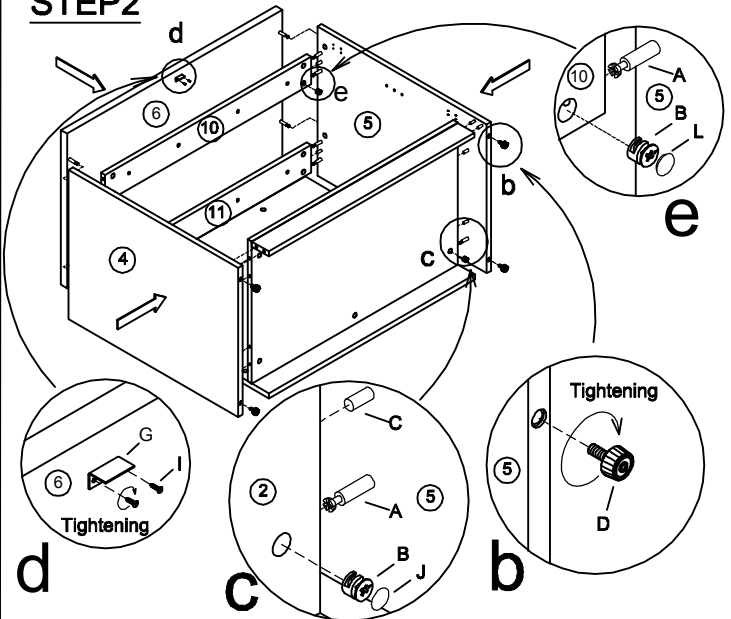
1/4 RIGHT
TURN FOR
LOCKING

MAKE SURE THE ARROW IS POINTING UPWARDS
BEFORE INSERTING INTO THE PANEL'S HOLE.



a

STEP2



d

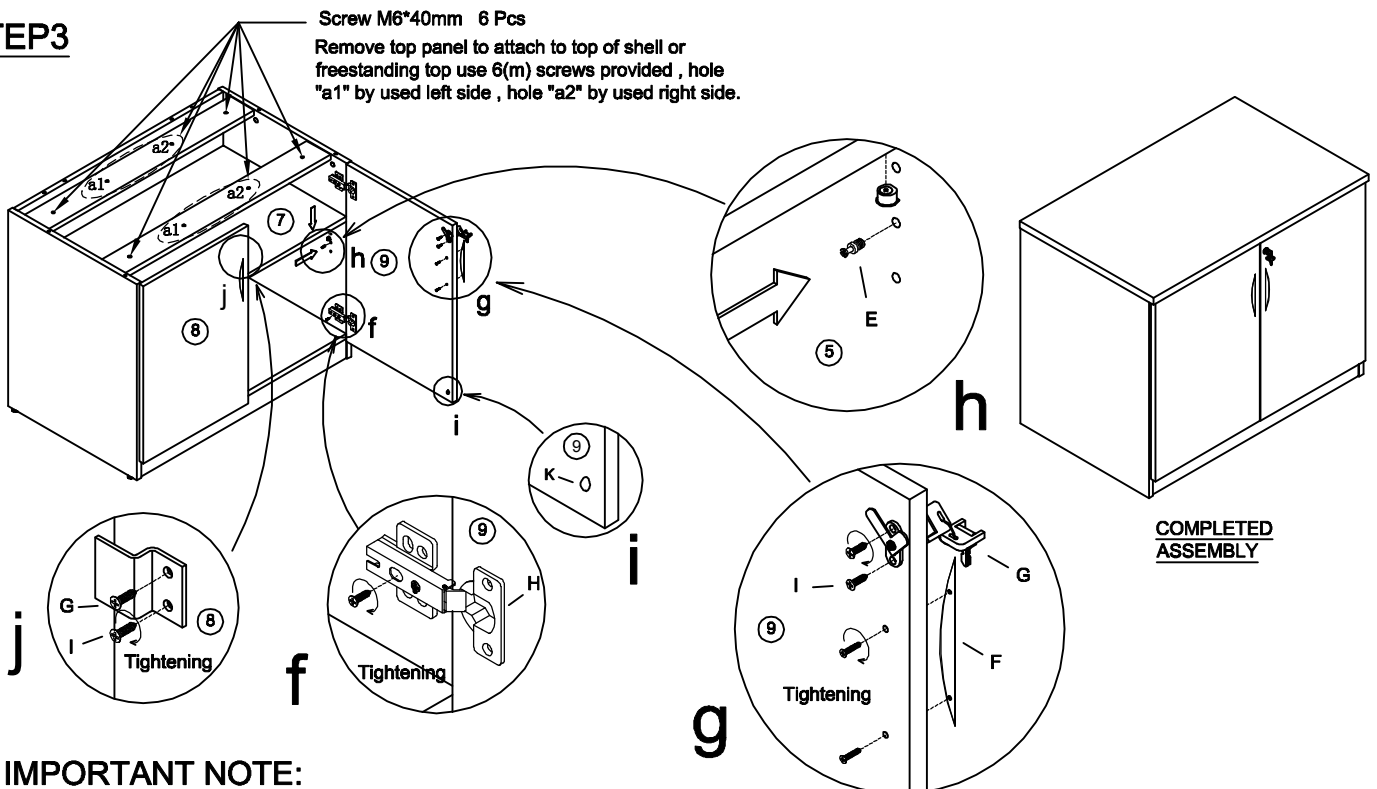
c

b

STEP3

Screw M6*40mm 6 Pcs

Remove top panel to attach to top of shell or
freestanding top use 6(m) screws provided, hole
"a1" by used left side, hole "a2" by used right side.



COMPLETED
ASSEMBLY

IMPORTANT NOTE:

- It is advisable to assemble unit on a carpet to avoid scratch.
- Check to be sure that you have all parts and hardware.
- Don't tighten all screws/bolts until all completely assembled.
- It is recommended to require 2 persons to complete the assembling.