










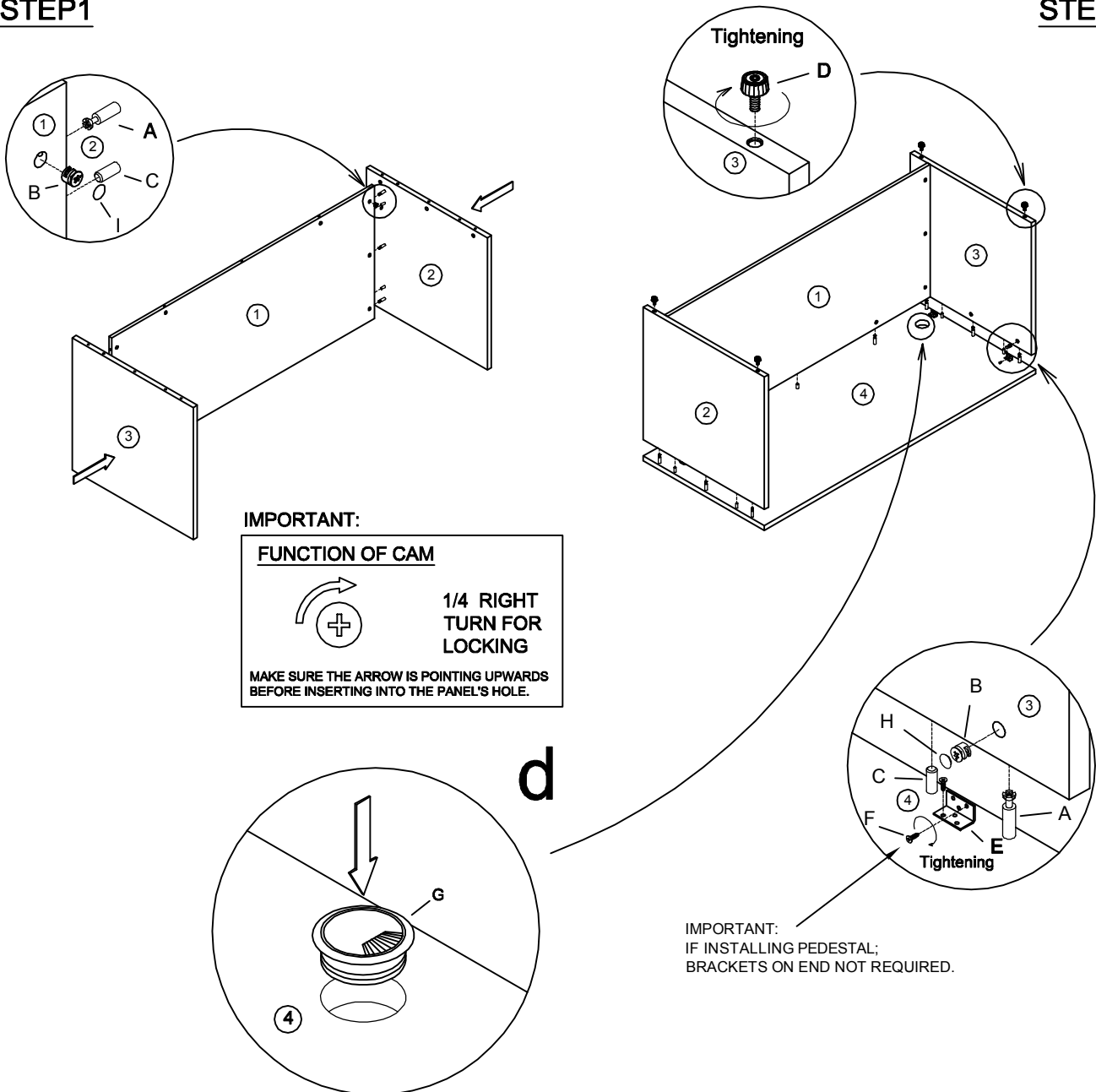
Desk Shells

LO2/08-22

| A | B | C | D | E | F | G | H | I |
|---|---|---|---|---|---|---|---|---|
|  |  |  |  |  |  |  |  |  |
| Cam Lock Pin 14Pcs+2Pcs | Cam Lock 14Pcs+2Pcs | Dowel 9Pcs+2Pcs | Glide 4Pcs | L-Bracket 5Pcs | Screw #4* $\frac{1}{2}$ " 30Pcs+5Pcs | Grommet 2Pcs | DEEP CAMLOCK CAP 6Pcs+1Pcs | CAMLOCK CAP 8Pcs+1Pcs |

STEP1

STEP2



IMPORTANT NOTE:

- It is advisable to assemble unit on a carpet to avoid scratch.
- Check to be sure that you have all parts and hardware.
- Don't tighten all screws/bolts until all completely assembled.
- It is recommended to require 2 persons to complete the assembling.